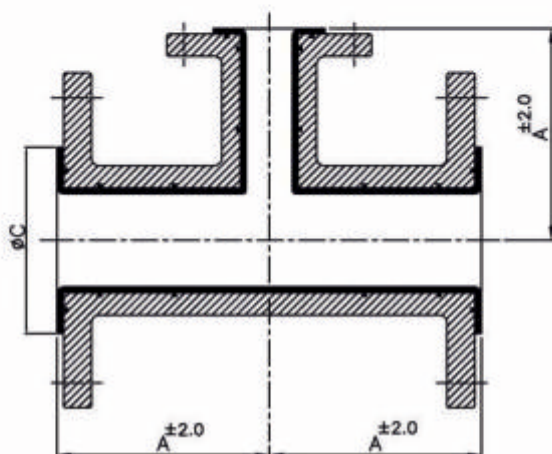
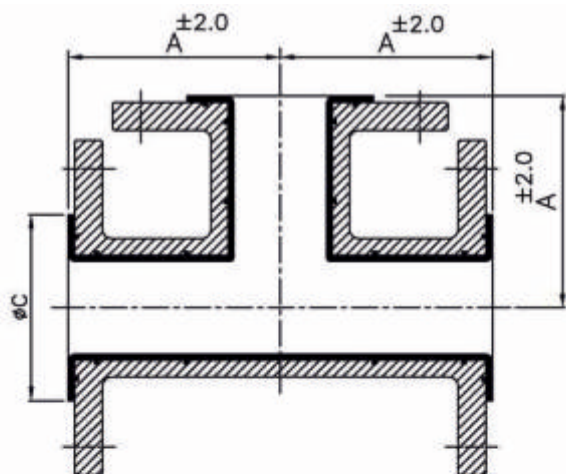




LINED EQUAL-UNEQUAL TEE

Schematic Representation Only



Housing Material Options :

- Ductile Iron GGG40.3 / ASTM A395
- Cast Steel ASTM A216 Gr.WCB
- Steel Fabrication – ASTM A106 Gr.B SCH-40 with Flanges are as per ASTM A105 / IS 2062.

Lining Material Options :

- FEP - ASTM D 2116
- PFA - ASTM D 3307
- PVDF - ASTM D 3322
- PP - ASTM D 4101
- HDPE

Dimensional Data :

ANSI #150 Flanged		
SIZE	A (mm)	ØC (mm)
DN15-1/2"	65	35
DN20-3/4"	75	43
DN25-1"	89	51
DN40-1 1/2"	102	73
DN50-2"	114	92
DN80-3"	140	127
DN100-4"	165	157
DN150-6"	203	216
DN200-8"	229	270
DN250-10"	279	323
DN300-12"	305	381

*All Reducing sizes for Unequal Tee are available for above mentioned size range.

Technical Specifications :

- Flange : As per ANSI B16.5 / B 16.42
- Face to Face : As per ANSI B 16.5 #150
- Lining Thickness : 3 to 5 mm
- Other Flange Drillings like, DIN 2632 / 2633, BS 10 Table D, E or F are also available on request.

Test & Inspection Data :

Resins are confirming to the requirements of ASTM F1545-97 (2003)

- Hydraulic Test : 29 Kg/Cm² After Lining.
- Spark Test : 15 KV D.C After Lining.

Technical Information subject to change without notice

